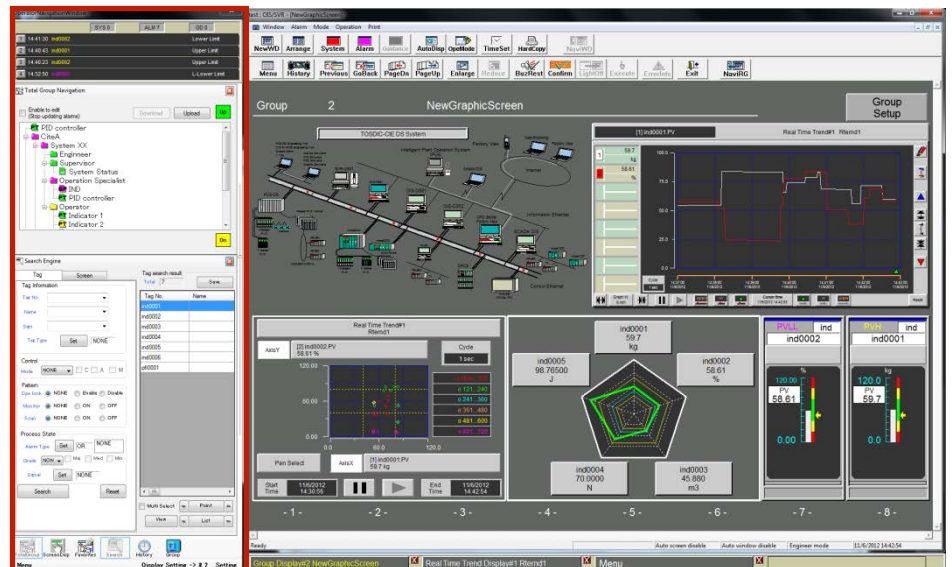


OIS Navigation Package

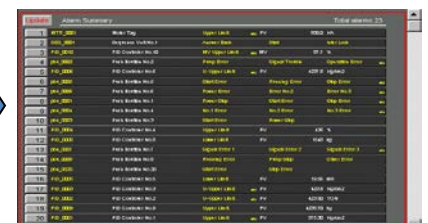
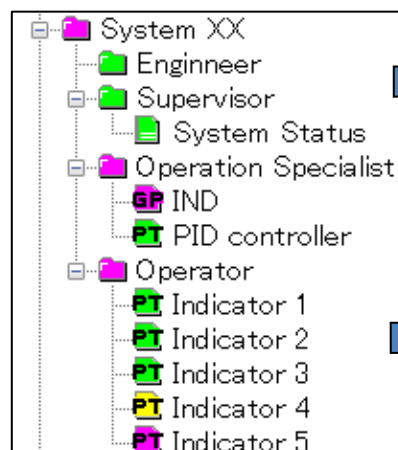
Make plant operation comfortable with a wide screen navigation monitor

An innovative new navigation function, supporting a wide screen monitor (1920 × 1200、1920 × 1080), has been added to OIS-DS for improved plant operation. The Navigation function provides an intuitive interface and simplifies plant operation.

By expanding the monitoring scope operational visibility of the plant is significantly improved.



Simplify the navigation and operation.

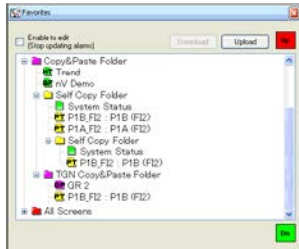


Features

OIS Navigation Package adds new navigation functions to the existing OIS-DS monitoring function when a wide screen, with a resolution of 1920×1200 or 1920×1080, is used. The use of navigation functions such as integrated group navigation for system monitoring and bookmarking, which can be customized on an individual operator basis, improves screen navigation, visualization of the plant information and simplifies operation.



Overview of navigation function



1. Total Group Navigation

2. Favorites Navigation

This function displays the systems as folders/items in a tree form. A folder contains multiple items grouped together. Each item is allocated to a screen managed by OIS-DS. The type of alarm can be registered to the item, and its icon and its folder's icon are displayed in the appropriate alarm color. Double-clicking on or dragging and dropping the displayed item displays the screen registered to that item in the operator window. For Total Group Navigation, the entire system may be consolidated in this manner. Favorites Navigation manages and registers the screens based on alarm monitoring groups.



3. Screen Displayed Navigation

This function manages the OIS-DS screens on a button basis. Similar to tree form, the type of alarm can be registered and allocated to the buttons which also display the appropriate alarm color. Page selection buttons provided in the upper tier of the window also display the alarm color appropriate to the alarm attribute registered to the buttons in the corresponding page. Clicking on or dragging and dropping the button displays the screen registered to the button in the operator window.

Screen Displayed Navigation is managed and registered on an alarm monitoring group basis.



4. Search Engine

Searches the tags in the system by specifying the Tag's condition and/or attributes. Search criteria include Tag Number, Tag Name and Signal Category. Wild Cards are included. Searches can also use, Alarm Status, e.g. occurrence of sensor failure, or Alarm Grade, e.g. Major alarm, added to the criteria for finer search. Double-clicking on or dragging and dropping the searched tag displays the point screen in the operator window.

5. Screen History

Displays the history of the screens opened on the OIS window chronologically.

6. Tag Grouping

This function registers tags and graphics screens to be displayed on the group screens of the OIS window. With the use of group registration function of the Navigation Package, tags can be registered as well as graphics screens as a tag pattern display.



Notes

- Under no circumstances, our company assumes no responsibility for incidental damages resulting from the use or unavailability of this product (including, but not limited to damages from loss of business profits, business interruption, loss of business information or data, or other monetary damages).
- This product is not manufactured for the purpose of being applied to a system requiring safety directly involved human life as follows. Please contact your TOSHIBA sales representative if there is a possibility of using this product for such use. [Ex.] ◇Main control systems of nuclear power plants, safety protection systems in nuclear facilities or other important systems requiring safety ◇Operation control system for collective transportation systems, and air traffic control system ◇Medical control systems relating to life support
- Before using the product, please read the instructions manual carefully and understand the contents, and then use the product correctly.
- This product cannot be used for any application products that are not allowed to be manufactured and sold in accordance with all applicable domestic and foreign laws, rules and orders.
- This product is controlled for export or overseas provision by Foreign Exchange and Foreign Trade Act.
- This product is controlled by the U.S. Export Administration Regulations, and an approval of the U.S. government is required for export depending on the destination of export.
- The information contained herein is presented only as guide for the applications of our products. No responsibility is assumed by TOSHIBA for any infringement of patents or other rights of the third parties which may result from its use. No license is granted by implication or otherwise under any patent or patent rights of TOSHIBA.
- Contact Information

TOSHIBA CORPORATION

Social Infrastructure Systems Company
Security & Automation Systems Division
TEL: +81-44-331-1694 FAX: +81-44-548-9553
72-34, Horikawa-cho, Saiwai-ku, Kawasaki 212-8585, Japan

- Specifications or designs described in this catalog are subject to change without prior notice due to design change or other reasons.
- The contents in this catalog is as of January 2014.
- The name of the products described in this catalog may be used as a trademark by each company.